

1381st GSS (GSG)
ATTN: Mr. Whalen
Francis E. Warren AFB,
Wyoming 82001

6 April 1966

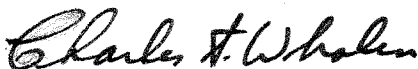
Sr. Julio Monges Caldera
Departamento de Gravimetria
Universidad Nacional Autonoma de Mexico
Torre de Ciencias
Ciudad Universitaria
Mexico 20, D. F. (Mexico)

Dear Julio,

Measurements were made with the Cambridge (1964) and Italian (1965) pendulums at Monterrey C. Although the International Gravimetric Bureau (IGB) catalogue indicates there is no gravity difference between sites A and B, our adjustments from A to K to B indicate that the difference A to B is 0.03 milligal. We have no ties from C to A, or from B to A. If you have the opportunity could you please provide about six one-way LaCoste Romberg ties between C and A, and between B and A to complete the IGB descriptions for these sites? Descriptions of Monterrey sites A, B and C are attached.

We are in the process of reprocessing the American Calibration Line data using new tables of dial factors for IRG 43, 44, 47 and 48. You will be furnished a copy of the results of the adjustments.

Sincerely,



CHARLES T. WHALEN
Chief, Gravity Division
(Member, Special Study
Group No. 5, IAG)

1 Atch
Monterrey Sites A, B,
and C.

1381st GSS (GSG)
ATTN: Mr. Whalen
Francis E. Warren AFB,
Wyoming 82001

6 April 1966

Sr. Julio Monges Caldera
Departamento de Gravimetria
Universidad Nacional Autonoma de Mexico
Torre de Ciencias
Ciudad Universitaria
Mexico 20, D. F. (Mexico)

Dear Julio,

Measurements were made with the Cambridge (1964) and Italian (1965) pendulums at Monterrey C. Although the International Gravimetric Bureau (IGB) catalogue indicates there is no gravity difference between sites A and B, our adjustments from A to K to B indicate that the difference A to B is 0.03 milligal. We have no ties from C to A, or from B to A. If you have the opportunity could you please provide about six one-way LaCoste Romberg ties between C and A, and between B and A to complete the IGB descriptions for these sites? Descriptions of Monterrey sites A, B and C are attached

We are in the process of reprocessing the American Calibration Line data using new tables of dial factors for LRG 43, 44, 47 and 48. You will be furnished a copy of the results of the adjustments.

Sincerely,

CHARLES T. WHALEN
Chief, Gravity Division
(Member, Special Study
Group No. 5, IAG)

1 Atch
Monterrey Sites A, B,
and C.

Gravity station:

MONTERREY

Country : **NUEVO LEON MEXICO**

Reference site : **83 50**

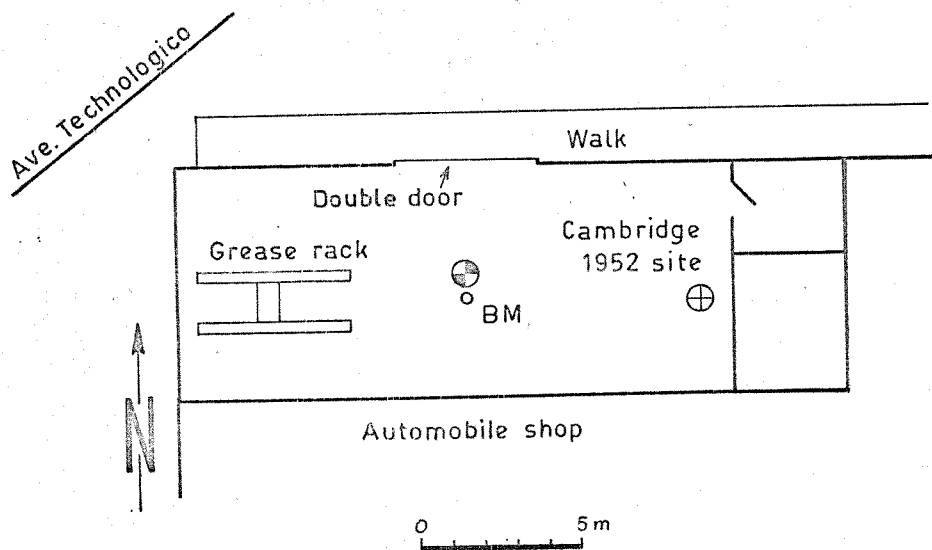
$\varphi = 25^{\circ} 38' N$ $\lambda = 100^{\circ} 17' W$

A = *Instituto Tecnológico, Automobile Shop, pend.*

Elevation = 566.9 meters

W.H.O.I. number GW 21; D.O. No. 9950-63

In the automobile shop of the Instituto Tecnológico y Estudios Superiores, on a line 4.6 m south of the sliding overhead door installed in the north (outside) wall, and about 7 m east of the west wall of the room. An "Instituto de Geofísica" gravity disk is installed at the site of observations.



PENDULUM TRIPS:

- A - Gulf C 1951 [70]
- (A) - Cambridge 1952 [21]
- A - Gulf K, M 1953 [70]
- A - Gulf M 1961 [69]
- C - Cambridge 1964

EXCENTRE MEAN TIES:

$g_A \approx g_B$ $g_B = g_K - 56.33$ $g_I \approx g_K$

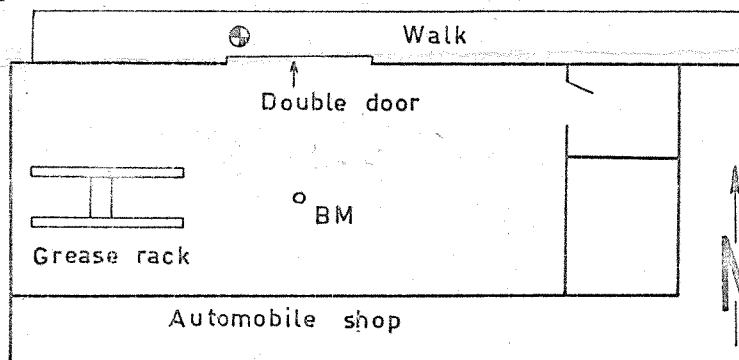
$g_A = 978.805$ gals (approx. value, Potsdam System)

B Instituto Tecnológico, Auto Shop, out $\phi = 25^{\circ}36'N$ $\lambda = 100^{\circ}17'W$ Elev. = 566.9 mtrs.

~~The station is located at the Instituto Tecnológico y Estudios Superiores in the automobile shop. It is 4.5 mtrs south of the sliding overhead door and 7.5 mtrs. east of the west wall of the room. The site is marked by a disk stamped "Gravidad". Observations were made at the take-off station located on the outside of the building at the west end of the overhead door.~~

Verbal description wrong

The station is in Monterrey at the Instituto Tecnológico y Estudios Superiores automotive shop, on the walk at the north side of the shop. Observations were made at the west end of the overhead double door.



C Instituto Tecnológico, Room 120 $\phi =$ _____ $\lambda =$ _____ Elev. = _____ mtrs.

The station is located at Room 120 of the Building "Aulas y Laboratorios # 2", at 2.99 m from the northern wall and 1.46 m from the eastern wall.

