

Album Fotográfico
del Volcan PARICUTIN

Estado de Michoacan

1943-1946

220(35-1)
A2
V.2

167

Instituto de Geología

Album Fotográfico
del Volcan Parícutin
Estado de Michoacán



INSTITUTO DE GEOLOGIA
BIBLIOTECA

220(334)

Al 2

v. 2

1943-1946

2ª Parte

Donación hecha por la
SOCIEDAD GEOLOGICA DE AMERICA

INSTITUTO DE GEOLOGIA

FILE NO.

DATE ACCESSIONED

SUBJECT

PARÍCUTIN VOLCANO,
MICHUACAN, MEXICO

NOTES

74. DEC. 6, 1943
FROM ANGAHUAN. CONDENSING
VAPORS FROM ZAPICHO FORMING A
HUGE CLOUD OF WATER VAPOR.

PHOTO: W. F. FOSHAG

75. JAN. 8, 1944
FOOT OF MESA DE COCJARAO.
FISSURING IN ASH-COVERED TERRAIN
ALONG A "TREMOR ZONE," WEST OF
CONE.

PHOTO: W. F. FOSHAG

FILM NO.



FILE NO.

DATE ACCESSIONED

SUBJECT

PARÍCUTIN VOLCANO,
MICHOACAN, MEXICO

NOTES

76. JAN. 8, 1944

FIRST DAY OF THE TAQUI LAVA
FLOW. THREE VENTS YIELDED A
CONTINUOUS FLOW OF LAVA.

PHOTO: W. F. FOSHAG

77. JAN. 9, 1944

AREA OF THE TAQUI VENTS
(LOWER CENTER) WITH SMALL
ERUPTIVE CHIMNEY IN ACTIVITY
(CENTER). LAVA FLOW IN LOWER
LEFT CORNER.

PHOTO: W. F. FOSHAG

FILM NO.



INSTITUTO DE GEOLOGIA
BIBLIOTECA

FILE NO.

DATE ACCESSIONED

SUBJECT

PARÍCUTIN VOLCANO,
MICHUACAN, MEXICO

NOTES

78. JAN. 9, 1944

FOOT OF CANIJUATA HILL,
SHOWING ASH-COVERED TERRAIN.
ASH-COVERED QUITZOCHO RIDGE IN
BACKGROUND.

PHOTO: W. F. FOSHAG

79. MAR. 2, 1944

A TONGUE OF THE TAQUI LAVA
FLOW. THE FRONT OF THE FLOW
CONTINUES THROUGH THE TREES.

PHOTO: W. F. FOSHAG



FILM NO.

FILE NO.

DATE ACCESSIONED

SUBJECT

PARÍCUTIN VOLCANO,
MICHOACAN, MEXICO

NOTES

30. MAR. 21, 1944

PAHOEHOE LAVA FROM
"VOLCANITO" (LEFT) ABOVE THE
TAQUI VENTS. THIS TYPE OF LAVA
WAS VERY RARE.

PHOTO: W. F. FOSHAG

81. MAY 24, 1944

HORNITOS ON THE ASH-COVERED
CRUST ABOVE TAQUI LAVA FLOW.
THE HORNITOS ARE FORMED BY A
GAS-CHARGED FROTH OF LAVA RISING
UP CREVICES.

PHOTO: W. F. FOSHAG



FILM NO.

FILE NO.

DATE ACCESSIONED

SUBJECT

PARÍCUTIN VOLCANO,
MICHHOACAN, MEXICO

NOTES

82. MAR. 1944

FROM THE NORTHEAST. RIPPLES
IN THE WINDELOWN ASH.

PHOTO: ARNO BREHME

83. MAR. 22, 1944

FROM THE NORTHWEST. THE
ORIGINAL TAQUI VENTS ARE ENGULFED
IN THEIR OWN LAVA AND THEIR SITE
OCCUPIED BY VOLCANITOS. LAVA
CONTINUES TO FLOW BELOW THE LAVA
CRUST (FOREGROUND).

PHOTO: W. F. FOSHAG



FILM NO.

FILE NO.

DATE ACCESSIONED

SUBJECT

PARÍCUTIN VOLCANO,
MICHOACAN, MEXICO

NOTES

88. MAR. 22, 1944

FROM MESA DEL COCJARAO.

ASH FALLING TO RIGHT, UNDER
ERUPTIVE CLOUD.

PHOTO: W. F. FOSHAG

89. MAR. 1944

FROM EQUIJUATA. LAVA FLOWS
IN MIDDLE GROUND; EXTINCT ZAPICHO
AT THE BASE OF THE CONE; DEAD
FOREST IN FOREGROUND.

PHOTO: ARNO BREHME



FILM NO.

FILE NO.

DATE ACCESSIONED

SUBJECT

PARÍCUTIN VOLCANO,
MICHUACAN, MEXICO

NOTES

86. APR. 19, 1944

VALLEY OF PARANGARICUTIRO
FROM JARÁTIRO HILL. TERRAIN
COVERED WITH ASH.

PHOTO: L. C. GRATON

87. LAVA FRONT MOVING DOWN
PARANGARICUTIRO VALLEY; LOOKING
EAST. ASH-COVERED FIELDS IN
FOREGROUND.

PHOTO: L. C. GRATON



FILM NO.

FILE NO.

DATE ACCESSIONED

SUBJECT

PARÍCUTIN VOLCANO,
MICHUACAN, MEXICO

NOTES

38. MAR. 22, 1944

FROM MESA DEL COCJARAO.
ASH FALLING TO RIGHT, UNDER
ERUPTIVE CLOUD.

PHOTO: W. F. FOSHAG

39. MAR. 1944

FROM EQUIJUATA. LAVA FLOWS
IN MIDDLE GROUND; EXTINGUISHED ZAPICHO
AT THE BASE OF THE CONE; DEAD
FOREST IN FOREGROUND.

PHOTO: ARNO BREHME



FILM NO.

FILE NO.

DATE ACCESSIONED

SUBJECT

PARÍCUTIN VOLCANO,
MICHHOACAN, MEXICO

NOTES

90. APR. 24, 1944

PARANGARICUTIRO LAVA TONGUE
BREAKING OUT OF OLD FRONT OF THE
TAQUI FLOW. LAVA FIELDS EXTEND
TO FAR HILLS.

PHOTO: W. F. FOSHAG

91. MAY 22, 1944

PARANGARICUTIRO LAVA TONGUE
AT OUTSKIRTS OF SAN JUAN
PARANGARICUTIRO.

PHOTO: W. F. FOSHAG



FILM NO.

FILE NO.

DATE ACCESSIONED

SUBJECT

PARÍCUTIN VOLCANO,
MICHHOACAN, MEXICO

NOTES

92. MAY 24, 1944

A VOLCANCITO WITH CROWN OF
WELDED BOMBS, AND BOMBS ABOUT ITS
BASE. FLAMES AROSE FROM THE
SUMMIT ORIFICE.

PHOTO: EZEQUIEL ORDOÑEZ

93. MAY 24, 1944

A VOLCANCITO WITH RUGOSE
LAVA FLOW FROM ITS SUMMIT.

PHOTO: EZEQUIEL ORDOÑEZ



FILM NO.

FILE NO.

DATE ACCESSIONED

SUBJECT

PARÍCUTIN VOLCANO,
MICHUACAN, MEXICO

NOTES

94. MAY 22, 1944

FROM JARÁTIRO HILL. ERUPTIVE
COLUMN FROM NORTH CRATER VENT.

PHOTO: W. F. FOSHAG

95. MAY 24, 1944

FROM JARÁTIRO HILL. GRITTY
ASH COLUMN, ACCOMPANIED BY
INVISIBLE (SUPERHEATED) VAPORS.

PHOTO: W. F. FOSHAG



FILM NO.

FILE NO.

DATE ACCESSIONED

SUBJECT

PARÍCUTIN VOLCANO,
MICHUACAN, MEXICO

NOTES

96. MAY 25, 1944

CRATER RIM. AT THIS TIME
THE CRATER WAS A STEEP INVERTED
CONE.

PHOTO: WARD SMITH

97. MAY 25, 1944

THE CRATER. IN THE BOTTOM
A SMALL VENT INTERMITTENTLY YIELD-
ING A DUST COLUMN; ABOVE A SAUCER-
SHAPED DEPRESSION EMITTING SEVERAL
JETS OF SUPERHEATED STEAM.

PHOTO: W. F. FOSHAG



FILM No.

FILE NO.

DATE ACCESSIONED

SUBJECT

PARÍCUTIN VOLCANO,
MICHUACAN, MEXICO

NOTES

98. JUNE 17, 1944

FROM EL CALVARIO, PARANGARI-
CUTIRO. PARANGARICUTIRO LAVA
TONGUE BEYOND HOUSES. STEAM
(FROM RAIN) FROM PARÍCUTIN FLOW
RIGHT MIDDLE DISTANCE.

PHOTO: W. F. FOSHAG

99. JUNE 19, 1944

EVACUATION OF SAN JUAN
PARANGARICUTIRO.

PHOTO: W. F. FOSHAG



FILM NO.

FILE NO.

DATE ACCESSIONED

SUBJECT

PARÍCUTIN VOLCANO,
MICHOACAN, MEXICO

NOTES

100. JUNE 20, 1944

PARANGARICUTIRO LAVA TONGUE
IN SAN JUAN PARANGARICUTIRO.

PHOTO: W. F. FOSHAG

101. JUNE 30, 1944

PARANGARICUTIRO LAVA TONGUE
COVERING THE TOWN.

PHOTO: W. F. FOSHAG



FILM NO.

FILE NO.

DATE ACCESSIONED

SUBJECT

PARÍCUTIN VOLCANO,
MICHOCAN, MEXICO

NOTES

102. JULY 7, 1944

PARANGARICUTIRO LAVA TONGUE
APPROACHING CHURCH OF PARANGARI-
CUTIRO.

PHOTO: W. F. FOSHAG

103. JULY 7, 1944

DISMANTLING THE CHURCH,
SAN JUAN PARANGARICUTIRO.

PHOTO: W. F. FOSHAG



FILM NO.

FILE NO.

DATE ACCESSIONED

SUBJECT

PARÍCUTIN VOLCANO,
MICHUACAN, MEXICO

NOTES

104. JULY 8, 1944

FROM THE NORTHWEST. HEAVY
VAPOR EMISSIONS CONDENSING AS
CLOUDS AND MINGLING WITH RAIN
CLOUDS.

PHOTO: W. F. FOSHAG

105. AUG. 14, 1944

FROM THE NORTHEAST. FOG,
DRIFTING IN FROM THE WEST, HALTED
BY RISING AIR CURRENTS FROM THE
CRATER.

PHOTO: W. F. FOSHAG



FILM NO.

FILE No.

DATE ACCESSIONED

SUBJECT

PARÍCUTIN VOLCANO,
MICHUACAN, MEXICO

NOTES

106. JULY 14, 1944

FROM JARÁTIRO HILL. ASH-
COVERED QUITZOCHO RIDGE, WITH
FUMARoles. LAVA FLOWS IN FORE-
GROUND.

PHOTO: W. F. FOSHAG

107. AUG. 16, 1944

FROM JARÁTIRO HILL.
QUITZOCHO RIDGE IN BACKGROUND.
CAMPAMENTO TONGUE OF TAQUI FLOW
IN MIDDLE GROUND. DEPTH OF LAVA
NOW 80 METERS.

PHOTO: W. F. FOSHAG



FILM No.

FILE NO.

DATE ACCESSIONED

SUBJECT

PARÍCUTIN VOLCANO,
MICHOACAN, MEXICO

NOTES

108. AUG. 16, 1944

FROM JARÁTIRO HILL.

PHOTO: W. F. FOSHAG

109. AUG. 17, 1944

FROM JARÁTIRO HILL. LAVA
FLOWS ABOUT TO PASS INTO OLD
CRATER (LOWER RIGHT).

PHOTO: EZEQUIEL ORDOÑEZ



FILM NO.

FILE No.

DATE ACCESSIONED

SUBJECT

PARÍCUTIN VOLCANO.
MICHOCAN, MEXICO

NOTES

110. JUNE 19, 1944

PARÍCUTIN LAVA FLOW AFTER A
RAIN.

PHOTO: W. F. FOSHAG

111. AUG. 1944

VOLCANO AND ASH-COVERED
TERRAIN FROM THE UPPER SLOPES OF
MT. TANCITARO.

PHOTO: HONORATO GONZALEZ, CASTRO



FILM No.

FILE NO.

DATE ACCESSIONED

SUBJECT

PARÍCUTIN VOLCANO,
MICHUACAN, MEXICO

NOTES

112. JULY 31, 1943

TYPICAL BLOCK LAVA FROM A
SMALL FLOW FROM QUITZOCHO RIDGE.

PHOTO: W. F. FOSHAG

113. MAR. 23, 1944

TYPICAL LAVA FRONT,
ZAPICHO LAVA AT THE URUAPAN-
PARANGARICUTIRO ROAD.

PHOTO: W. F. FOSHAG



FILM NO.

FILE NO.

DATE ACCESSIONED

SUBJECT

PARÍCUTIN VOLCANO,
MICHUACAN, MEXICO

NOTES

114. JULY 1, 1944

TORN AND TWISTED LAVA
TYPICAL OF THE PARANGARICUTIRO
TONGUE OF THE TAQUI FLOW.

PHOTO: W. F. FOSHAG



115. MAY, 1944

"CORDWOOD" LAVA FROM A
VOLCANCITO. HORNITOS IN BACK-
GROUND. THIS TYPE OF LAVA WAS
VERY RARE.

PHOTO: EZEQUIEL ORDOÑEZ



INSTITUTO DE GEOLOGIA
BIBLIOTECA

FILM No.

FILE NO.

DATE ACCESSIONED

SUBJECT

PARÍCUTIN VOLCANO,
MICHUACAN, MEXICO

NOTES

116. JULY, 1943

A LARGE FUMAROLE IN THE
ASH-COVERED QUITZOCHO FLOW,
DEPOSITING AMMONIUM CHLORIDE.

PHOTO: W. F. FOSHAG

117. AUG. 17, 1944

FUMAROLES IN ZAPICHO FLOW
WITH DEPOSITS OF ORANGE IRON,
ALUMINUM CHLORIDES.

PHOTO: W. F. FOSHAG



FILM NO.

FILE NO.

DATE ACCESSIONED

SUBJECT

PARÍCUTIN VOLCANO,
MICHUACAN, MEXICO

NOTES

118. AUG. 17, 1944

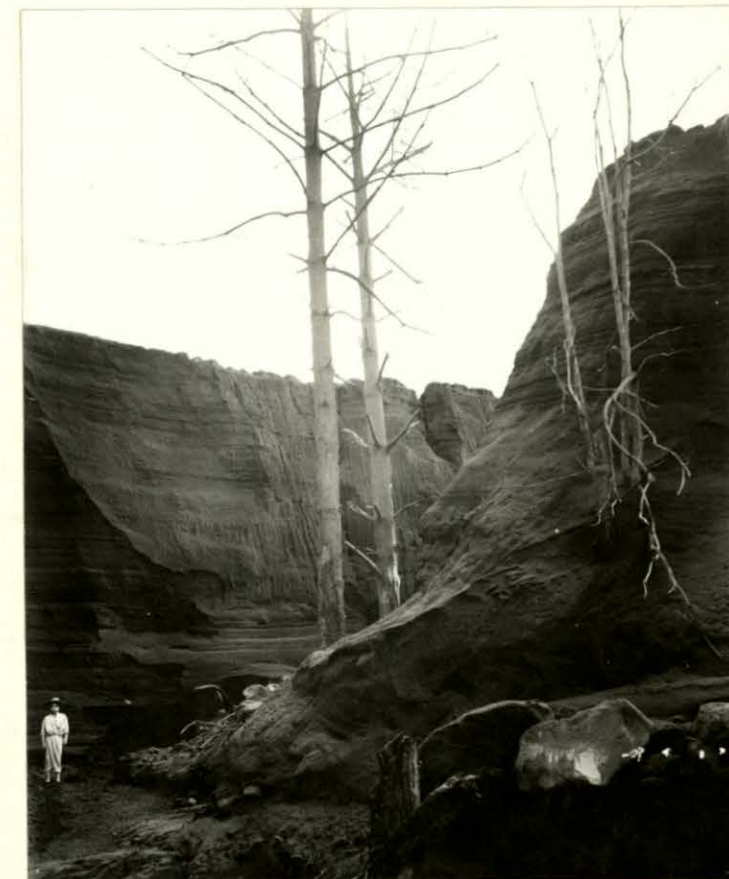
GRABEN FORMED BY ADVANCING
LAVA ON EARLIER FLOW.

PHOTO: W. F. FOSHAG

119. AUG. 16, 1944

ARROYO ERODED IN ASH BY A
SINGLE STORM. FOOT OF CANIJUATA
HILL.

PHOTO: W. F. FOSHAG



FILM NO.

FILE NO.

DATE ACCESSIONED

SUBJECT

PARÍCUTIN VOLCANO,
MICHOACAN, MEXICO

NOTES

120. MID NOVEMBER, 1944

AIRPLANE VIEW FROM SOUTH.
THE AGUAN BREAK AND THE AGUAN
FLOW.

PHOTO: FRANK ZIERER

121. NOV. 27, 1944

THE AGUAN VENT FROM THE AIR.
THE AGUAN BREAK IS ON THE RIGHT.
THE AGUAN FLOW COVERS THE TAQUI
FLOW.

PHOTO: OTTO O. FISHER



FILM NO.

FILE NO.

DATE ACCESSIONED

SUBJECT

PARÍCUTIN VOLCANO,
MICHHOACAN, MEXICO

NOTES

122. NOV. 29, 1944

AIRPLANE VIEW OF CRATER AND
AGUAN FLOW.

PHOTO: W. F. FOSHAG

123. DEC. 2, 1944

DETAIL OF AGUAN FLOW, SHOW-
ING LATERAL RUBBLE RIDGE AND
SMALL KIPUKAS OF TAQUI LAVA.

PHOTO: OTTO O. FISHER



FILM NO.

FILE NO.

DATE ACCESSIONED

SUBJECT

PARÍCUTIN VOLCANO,
MICHOCAN, MEXICO

NOTES

124. NOV. 23, 1944

TAQUI FLOW, WEST BASE OF
CONE, LOOKING SOUTH; A KIPUKA
OF ASH-COVERED TERRAIN; ASH-
COVERED AND GULLIED SLOPES OF
CANIJUATA HILL ON RIGHT.

PHOTO: EZEQUIEL ORDOÑEZ

125. DEC. 2, 1944

DETAILS OF THE PARANGARICUTIRO
TONGUE.

PHOTO: OTTO O. FISHER



* FILM NO.

FILE NO.

DATE ACCESSIONED

SUBJECT

PARÍCUTIN VOLCANO,
MICHOCAN, MEXICO

NOTES

126. DEC. 4, 1944

FROM JARÁTIRO HILL. ZONES
OF WET ASH ON THE CONE WERE A
COMMON FEATURE.

PHOTO: W. F. FOSHAG

127. DEC. 4, 1944

FROM JARÁTIRO HILL, SHOWING
ERRATIC CHARACTER OF THE ERUP-
TIONS DURING THE TAQUI PERIOD.

PHOTO: W. F. FOSHAG



FILM NO.

FILE NO.

DATE ACCESSIONED

SUBJECT

PARÍCUTIN VOLCANO,
MICHUACAN, MEXICO

NOTES

128. DEC. 6, 1944

FROM JARÁTIRO HILL. SINGLE
EXPLOSIVE BURST.

PHOTO: W. F. FOSHAG

129. DEC. 9, 1944

COLUMN OF GRITTY ASH WITH
LITTLE VISIBLE STEAM.

PHOTO: W. F. FOSHAG



FILM NO.

FILE NO.

DATE ACCESSIONED

SUBJECT

PARÍCUTIN VOLCANO,
MICHHOACAN, MEXICO

NOTES

130. DEC. 7, 1944

CAMPAMENTO TONGUE OF THE
TAQUI FLOW FRACTURING UNDER
PRESSURE OF LATER AGUAN FLOW.

PHOTO: W. F. FOSHAG

131. DEC. 17, 1944

ASH-COVERED FLOW; ONLY THE
ROUGH EXCRESCENCES OF LAVA
PROJECT ABOVE THE ASH.

PHOTO: EZEQUIEL ORDOÑEZ



FILM NO.

FILE NO.

DATE ACCESSIONED

SUBJECT

PARÍCUTIN VOLCANO,
MICHOACAN, MEXICO

NOTES

L32-33. JAN. 23, 1945

TWO VIEWS OF THE INTERIOR
OF THE CRATER, WITH ONE ERUPTIVE
VENT, AND A MEDIUM SIZED
ERUPTIVE COLUMN, CHARGED WITH ASH.

PHOTOS: W. F. FOSHAG



FILM NO.

FILE NO.

DATE ACCESSIONED

SUBJECT

PARÍCUTIN VOLCANO,
MICHUACAN, MEXICO

NOTES

134. JAN. 24, 1945

FROM JARÁTIRO HILL. ASH
FALLING ON CANICJUATA HILL. IN
THE MIDDLE GROUND THE ASH-COVERED
QUITZOCHO RIDGE.

PHOTO: W. F. FOSHAG

135. JAN. 25, 1945

CHURCH AT SAN JUAN
PARANGARICUTIRO ENGULFED IN THE
LAVA OF THE PARANGARICUTIRO
TONGUE OF THE TAQUI FLOW.

PHOTO: W. F. FOSHAG



FILM NO.

FILE NO.

DATE ACCESSIONED

SUBJECT

PARÍCUTIN VOLCANO,
MICHUACAN, MEXICO

NOTES

136. JAN. 24, 1945

FROM JARÁTIRO HILL.

PHOTO: W. F. FOSHAG

137. JAN. 25, 1945

FROM CUZEÑO. LAVA FLOW AND
CHURCH TOWER OF PARANGARICUTIRO
IN MIDDLE GROUND.

PHOTO: EZEQUIEL ORDOÑEZ



FILM NO.

FILE NO.

DATE ACCESSIONED

SUBJECT

PARÍCUTIN VOLCANO,
MICHUACAN, MEXICO

NOTES

138. FEB. 19, 1945

FROM JARÁTIRO HILL.

PHOTO: EZEQUIEL ORDOÑEZ

139. FEB. 25, 1945

FROM THE SITE OF PARÍCUTIN
VILLAGE. THE HUMMOCKS IN THE
FOREGROUND ARE THE ASH-COVERED
ROOFS OF THE HOUSES OF PARÍCUTIN.

PHOTO: FRANK ZIERER



FILM NO.

FILE NO.

DATE ACCESSIONED

SUBJECT

PARÍCUTIN VOLCANO,
MICHUACAN, MEXICO

NOTES

140. FEB. 1945

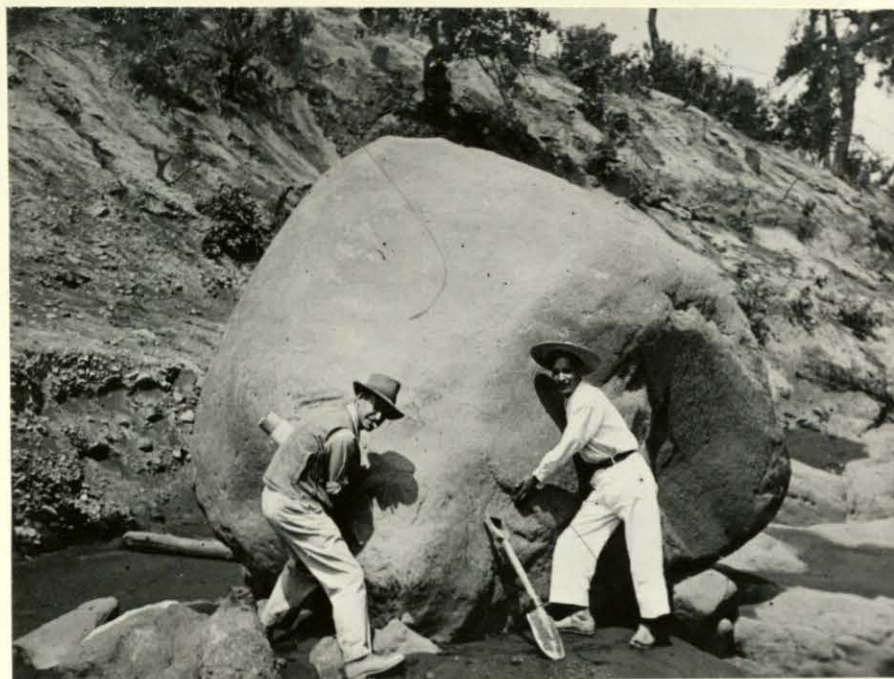
ARROYO NEAR PERIBAN. THE
HEAVILY ASH-CHARGED STREAMS WERE
ABLE TO MOVE LARGE BOULDERS.

PHOTO: ADAM PEREZ-PEÑA

141. FEB. 1945

ARROYO NEAR PERIBAN. THE
WATERS OF THE STREAMS SOMETIMES
CARRIED MORE THAN 2/3 ASH.

PHOTO: ADAM PEREZ-PEÑA



FILM NO.

FILE NO.

DATE ACCESSIONED

SUBJECT

PARÍCUTIN VOLCANO,
MICHOCAN, MEXICO

NOTES

142. FEB. 18, 1945

LAVA FLOW FROM TAQUI VENTS
MOVING DOWN HILL SLOPE.

PHOTO: EZEQUIEL ORDOÑEZ

143. JULY, 1945

SAME AREA AS 142. THE ACTIVE
LAVA CHANNEL IS THE DARK STREAM
BETWEEN RUBBLE DIKE.

PHOTO: EZEQUIEL ORDOÑEZ



FILM NO.

FILE NO.

DATE ACCESSIONED

SUBJECT

PARÍCUTIN VOLCANO,
MICHUACAN, MEXICO

NOTES

144. OCT. 29, 1945

SAME AREA AS 142.

PHOTO: EZEQUIEL ORDÓÑEZ

145. JULY, 1945

SAME AS 142.

PHOTO: EZEQUIEL ORDÓÑEZ



FILM NO.

FILE NO.

DATE ACCESSIONED

SUBJECT

PARÍCUTIN VOLCANO,
MICHOACAN, MEXICO

NOTES

146-147. MAY 27, 1945

CRATER. NORTH VENT EMITTING
CONTINUOUS COLUMN OF WHITE VAPORS.
SOUTH CRATER, BEYOND MEDIAL RIDGE,
ERUPTED AT IRREGULAR INTERVALS.

PHOTO: W. F. FOSHAG



FILM NO.

FILE NO.

DATE ACCESSIONED

SUBJECT

PARÍCUTIN VOLCANO,
MICHUACAN, MEXICO

NOTES

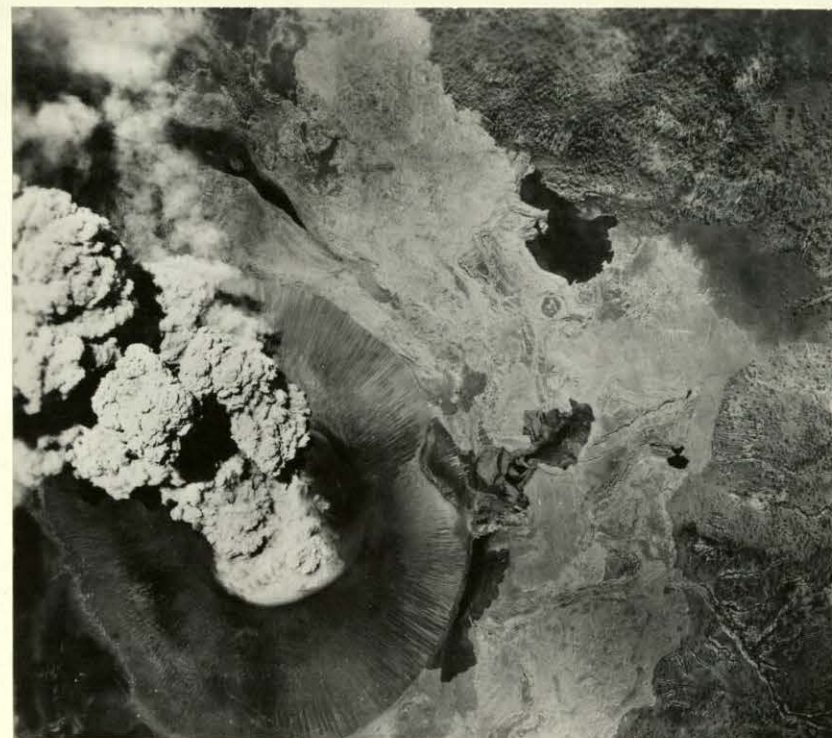
148. APR. 30, 1945

AIR VIEW. LAVAS FROM THE
TAQUI VENTS (BLACK) ON OLDER
TAQUI LAVAS. LAVA ISSUING FROM
BENEATH CRUST (UPPER BLACK).
DRAINAGE PATTERN IN ASH, LOWER
SLOPES MESA DE COCJARAO.
SCALE ABOUT 1:30,000.

PHOTO: MEXICANA AEROFOTO, S. A.

149. JULY 31, 1945

FROM TANCITARO.



FILM No.

FILE NO.

DATE ACCESSIONED

SUBJECT

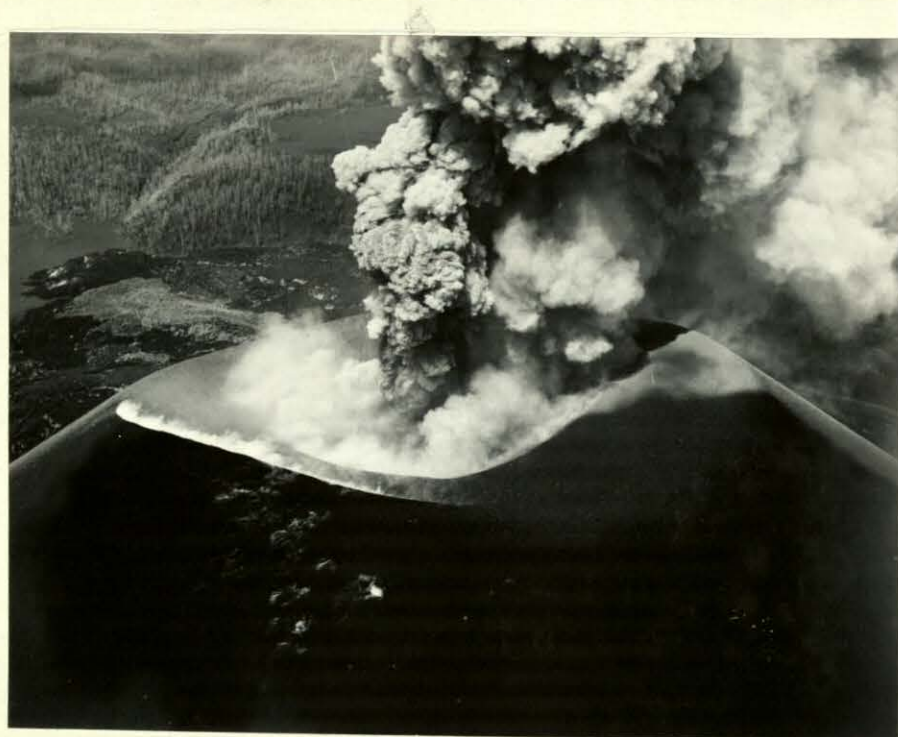
PARÍCUTIN VOLCANO,
MICHOACAN, MEXICO

NOTES

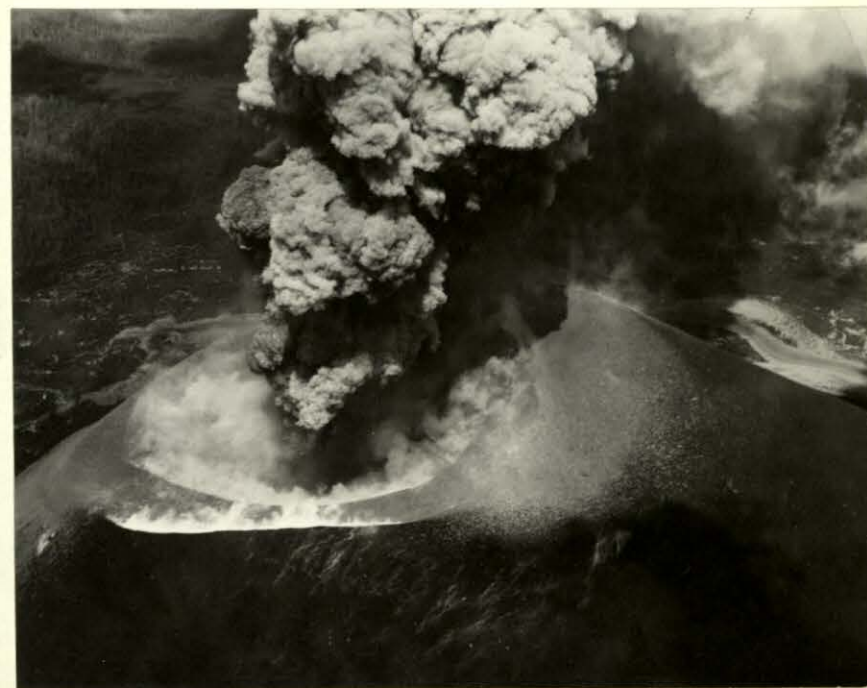
150-151. JULY 31, 1945

AIR VIEW OF CRATER TAKEN
FROM HELICOPTER.

PHOTOS: W. F. FOSHAG



INSTITUTO DE GEOLOGIA
BIBLIOTECA



FILM No.

FECHA DE DEVOLUCION

El lector se obliga a devolver este libro
antes del vencimiento de préstamo señala-
do por el último sello.





INSTITUTO DE GEOLOGIA
BIBLIOTECA

