

Album Fotográfico
del Volcan PARICUTIN

Estado de Michoacan

1943-1946

220(334)

Al2

v.1

168

Instituto de Geología

Album Fotográfico
del Volcan Parícutin
Estado de Michoacán

220(334)

Alz.

v. 1.



INSTITUTO DE GEOLOGIA
BIBLIOTECA

1943-1946

1ª Parte

Donación hecha por la
SOCIEDAD GEOLOGICA DE AMERICA

INSTITUTO DE GEOLOGIA

FILE NO.

DATE ACCESSIONED

SUBJECT

PARÍCUTIN VOLCANO,
MICHOCAN, MEXICO

NOTES

1. 1936

AIRPLANE PHOTOGRAPH OF THE
PRE-PARÍCUTIN VOLCANO TERRAIN.
THE FIELDS OF CUIYÚTZIRO AND
QUITZOCHO ARE IN THE WHITE PATCH
NEAR THE LOWER CENTER MARGIN OF
THE AREA. JARÁTIRO HILL IS THE
RIDGE BORDERING THEM ON THE
NORTH. FROM S.W. TO N.E. ARE
PARÍCUTIN, SAN JUAN PARANGARI-
CUTIRO AND ANGAHUAN.

SCALE: 1:40,000

PHOTO: CIA. MEXICANA AEROFOTO,
S. A.



FILM NO.

FILE NO.

DATE ACCESSIONED

SUBJECT

PARÍCUTIN VOLCANO,
MICHUACAN, MEXICO

NOTES

2-3. FEB. 20, 1943

5 P.M. FROM THE OUTSKIRTS
OF PARANGARICUTIRO. THESE TWO
PHOTOS WERE TAKEN ONE-HALF HOUR
AFTER THE INITIAL OUTBREAK OF
PARÍCUTIN VOLCANO. THE LOCUS OF
THE VENT IS IN THE SMALL VALLEY
LYING BETWEEN JARÁTIRO HILL (RIDGE
ON LEFT) AND THE LOWER FLANKS OF
ST. TANCÍTARO (DISTANT HILLS).
MANICJUATA HILL ON THE RIGHT.



FILM NO.

FILE NO.

DATE ACCESSIONED

SUBJECT

PARÍCUTIN VOLCANO,
MICHUACAN, MEXICO

NOTES

4. FEB. 21, 1943

FROM THE NORTHEAST. THE
SMALL CONE, ABOUT 30 METERS HIGH,
IS VISIBLE ABOVE THE TREE TOPS.
ALTHOUGH THE PHOTOGRAPH SHOWS
ONE ERUPTIVE COLUMN, THE CRATER
HAD THREE ACTIVE VENTS.

PHOTO: SALVADOR ~~E~~ CEJA

5. SAME, SHOWING CULTIVATED
FIELDS UPON WHICH THE VOLCANO
GREW.

PHOTO: J. TRINIDAD



FILM No.

FILE NO.

DATE ACCESSIONED

SUBJECT

PARÍCUTIN VOLCANO,
MICHUACAN, MEXICO

NOTES

5. FEB. 22, 1943

FROM THE NORTHEAST. GREAT
QUANTITIES OF EJECTED BOMBS AND
LAPILLI CAUSED THE CONE TO GROW
RAPIDLY. VAPORS OF THE FIRST
(QUITZOCHO) LAVA FLOW ABOUT THE
BASE OF THE CONE.

PHOTO: RUFUS MORROW

7. FEB. 23, 1943

FROM THE NORTHEAST.
QUITZOCHO FLOW ABOUT BASE OF THE
CONE.

PHOTO: RAMIRO ROBLES RAMOS

FILM NO.



INSTITUTO DE GEOLOGIA
BIBLIOTECA

FILE NO.

DATE ACCESSIONED

SUBJECT

PARÍCUTIN VOLCANO,
MICHUACAN, MEXICO

NOTES

8. FEB. 24, 1943

FROM THE NORTHEAST.

PHOTO: EZEQUIEL ORDOÑEZ

9. FEB. 25, 1946

FROM THE NORTHEAST. THE
CONE IS HORSESHOE SHAPED, OPEN
TOWARD THE EAST. THE TREES ABOUT
THE BASE OF THE CONE DENUDED BY
FALLING BOMBS.

PHOTO: EZEQUIEL ORDOÑEZ



FILM NO.

FILE NO.

DATE ACCESSIONED

SUBJECT

PARÍCUTIN VOLCANO,
MICHUACAN, MEXICO

NOTES

10. FEB. 26, 1943

FROM THE NORTHEAST. THE
HORSESHOE SHAPED CONE IS 167
METERS HIGH. QUITZOCHO LAVA FLOW
WITH FUMARoles IN MIDDLE GROUND.

PHOTO: EZEQUIEL ORDOÑEZ

11. FEB. 28, 1943

FROM THE NORTHEAST. DUST
FROM FALLING BOMBS OBSCURES THE
CONE.

PHOTO: INSTITUTO DE GEOLOGIA



FILM NO.

FILE NO.

DATE ACCESSIONED

SUBJECT

PARÍCUTIN VOLCANO,
MICHUACAN, MEXICO

NOTES

12. FEB. 27, 1943

FROM THE NORTHEAST.

QUITZOCHO LAVA FLOW WITH ABUNDANT
FUMARoles.

PHOTO: EZEQUIEL ORDOÑEZ

13. FEB. 28, 1943

FROM THE NORTHEAST.

QUITZOCHO LAVA FLOW ON LEFT;
LAPILLI COVERED FIELD IN FORE-
GROUND.

PHOTO: INSTITUTO DE GEOLOGIA



FILM NO.

FILE NO.

DATE ACCESSIONED

SUBJECT

PARÍCUTIN VOLCANO,
MICHUACAN, MEXICO

NOTES

14. MAR. 1, 1943

FROM THE NORTHEAST. BLOCKY
FRONT OF THE QUITZOCHO LAVA FLOW
IN FOREGROUND.

PHOTO: INSTITUTO DE GEOLOGIA

15. MAR. 1, 1943

FROM THE NORTHEAST. THE
SADDLE CREST OF THE CONE IS THE
RESULT OF SCOURING BY THE ERUPTIVE
COLUMN.

PHOTO: EZEQUIEL ORDOÑEZ



FILM NO.

FILE NO.

DATE ACCESSIONED

SUBJECT

PARÍCUTIN VOLCANO.
MICHUACAN. MEXICO

NOTES

16. MAR. 2, 1943

FROM THE NORTHEAST.

ERUPTIONS FROM TWO CRATER VENTS.

PHOTO: INSTITUTO DE GEOLOGIA

17. MAR. 2, 1943

FROM THE NORTHEAST. THE
HORSESHOE SHAPE OF THE CONE IS
THE RESULT OF THE RAFTING AWAY
OF THE EAST WALL BY FLOWING LAVA.
QUITZOCHO LAVA FLOW IN MIDDLE
GROUND.

PHOTO: INSTITUTO DE GEOLOGIA



FILM NO.

FILE NO.

DATE ACCESSIONED

SUBJECT

PARÍCUTIN VOLCANO,
MICHUACAN, MEXICO

NOTES

8. MAR. 4, 1943

FROM THE NORTHEAST.

IRREGULAR SHAPE OF CRATER RIM DUE
TO SHIFTING OF ERUPTIVE VENTS.

PHOTO: EZEQUIEL ORDOÑEZ

9. MAR. 4, 1943

FROM THE NORTHEAST. LOOK-
ING INTO OPEN HORSESHOE CRATER.

PHOTO: INSTITUTO DE GEOLOGIA



FILM NO.

FILE NO.

DATE ACCESSIONED

SUBJECT

PARÍCUTIN VOLCANO.
MICHUACAN. MEXICO

NOTES

20. MAR. 5, 1943

AIRPLANE VIEW OF PARÍCUTIN
VOLCANO AND TERRAIN, SHOWING THE
QUITZOCHO LAVA FLOW AND THE
FUMARoles ABOUT ITS EXPANDING
FRONT.

PHOTO: U. S. NAVY

21. MAR. 5, 1943

FROM THE EAST. CONE OPEN
TOWARD THE NORTHEAST.

PHOTO: INSTITUTO DE GEOLOGIA



FILM NO.

FILE NO.

DATE ACCESSIONED

SUBJECT

PARÍCUTIN VOLCANO,
MICHUACAN, MEXICO

NOTES

22. MAR. 10, 1943

FROM THE EAST, SHOWING THE
OPEN CONE AND CRATER. BOMB
COVERED QUITZOCHO FLOW THROUGH
THE TREES.

PHOTO: EZEQUIEL ORDÓÑEZ

23. MAR. 14, 1943

FROM THE EAST. OPEN CONE
AND LAVA RIDGE OF THE QUITZOCHO
FLOW. NIGHT VIEW, WITH ABUNDANT
INCANDESCENT BOMBS. TIME
EXPOSURE.

PHOTO: EL BORCEAUI
G

FILM NO.

FILE NO.

DATE ACCESSIONED

SUBJECT

PARÍCUTIN VOLCANO,
MICHUACAN, MEXICO

NOTES

24. MAR. 19, 1943

NIGHT VIEW, SHOWING COLUMN
OF INCANDESCENT MATERIAL AND
ACCUMULATION OF BOMBS ON THE
SLOPE OF THE CONE. TIME
EXPOSURE.

PHOTO: CHAVEZ RUIZ

25. MAR. 20, 1943

FROM JARÁTIRO HILL. THE
MAXIMUM EXTENT OF THE QUITZOCHO
FLOW IS SHOWN.



FILM NO.

FILE NO.

DATE ACCESSIONED

SUBJECT

PARÍCUTIN VOLCANO,
MICHUACAN, MEXICO

NOTES

26. MAR. 24, 1943

FROM PARÍCUTIN VILLAGE.

BEGINNING OF HEAVY CINERITIC PHASE.

MESA DEL CORRAL FLOW IN MIDDLE
GROUND.

PHOTO: W. F. FOSHAG

27. MAR. 24, 1943

LAVA FRONT OF QUITZOCHO FLOW
AT BASE OF JARÁTIRO HILL WITH MANY
FUMARoles. ASH-COVERED TERRAIN
IN FOREGROUND.

PHOTO: W. F. FOSHAG



FILM NO.

FILE NO.

DATE ACCESSIONED

SUBJECT

PARÍCUTIN VOLCANO,
MICHUACAN, MEXICO

NOTES

28. MAR. 24, 1943

RUGGED FRONT OF MESA DEL
CORRAL FLOW AT BASE OF JARÁTIRO
HILL, WITH ABUNDANT FUMARoles.

PHOTO: W. F. FOSHAG

29. APR. 4, 1943

FROM JARÁTIRO HILL. HEAVY
CINERITIC PHASE. WHITE STREAKS
ON SLOPE OF CONE ARE DUST RAISED
BY ROLLING BOMBS.

PHOTO: ARNO BREHME



FILM NO.

FILE NO.

DATE ACCESSIONED

SUBJECT

PARÍCUTIN VOLCANO,
MICHUACAN, MEXICO

NOTES

30. APR. 19, 1943

FROM THE NORTH. INNER CONE,
"OMBLIGO"
OR "UMBILICO." THIS INNER CONE
FORMED WITHIN THE CRATER AND LATER
MERGED WITH THE MAIN CONE. ASH-
COVERED QUITZOCHO AND MESA DEL
CORRAL FLOWS IN FOREGROUND.
HEAVY CINERITIC PHASE.

PHOTO: L. C. GRATON



FILM NO.

FILE NO.

DATE ACCESSIONED

SUBJECT

PARÍCUTIN VOLCANO,
MICHUACAN, MEXICO

NOTES

51. APR. 22, 1943

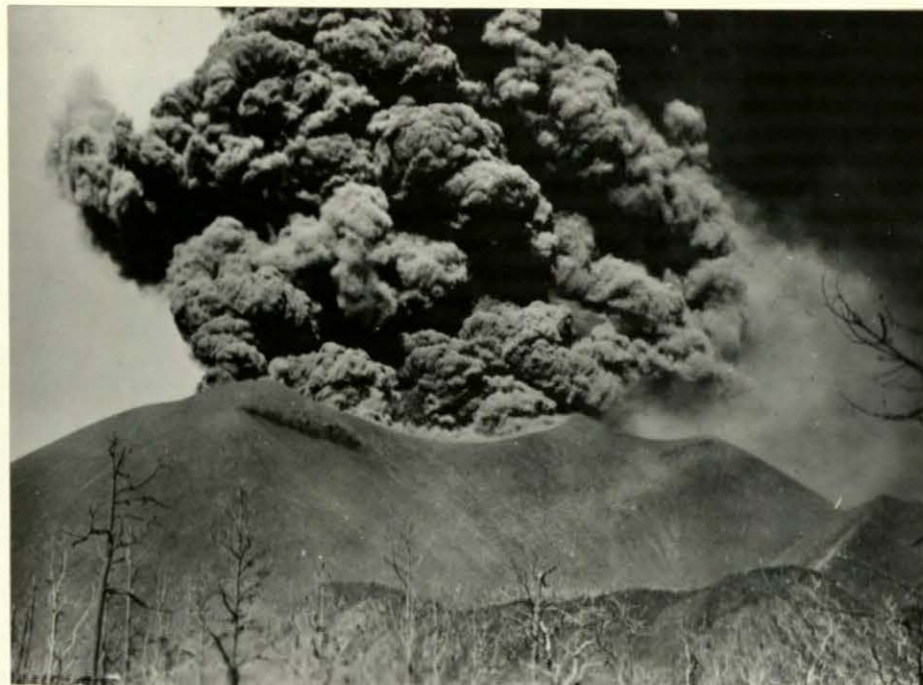
FROM THE SOUTH. SHOWING THE
COLLAPSED SLOPE, PARTLY RESTORED.
THESE COLLAPSES ARE DUE TO RAFTING
OF THE SLOPE OF THE CONE BY A LAVA
FLOW. HEAVY CINERITIC PHASE.

PHOTO: L. C. GRATON

52. MAY 24, 1943

FROM JARÁTIRO HILL. HEAVY
CINERITIC PHASE.

PHOTO: W. F. FOSHAG



FILM NO.

FILE NO.

DATE ACCESSIONED

SUBJECT

PARÍCUTIN VOLCANO,
MICHOACAN, MEXICO

NOTES

33-34. MAY 25, 1943

LIGHTNING FLASHES WERE
FREQUENT IN DENSE, SWIFTLY RISING
ERUPTIVE COLUMN.

PHOTO: RAFAEL GARCIA



INSTITUTO DE GEOLOGIA
BIBLIOTECA



FILM NO.

FILE NO.

DATE ACCESSIONED

SUBJECT

PARÍCUTIN VOLCANO.
MICHUACAN, MEXICO

NOTES

35. JUNE 9, 1943

FROM URUAPAN-PARÍCUTIN ROAD.

THE CINERITIC ERUPTIVE COLUMN
RISES OVER 6 KILOMETERS. HEAVY
ASH FALL TO THE LEFT.

PHOTO: W. F. FOSHAG

36. JUNE 9, 1943

FROM THE URUAPAN HIGHWAY.

DRIFTING ERUPTIVE CLOUD TO THE
SOUTH. THE FIRST VAPOR CLOUDS
FORM IN THE FALLING ASH.

PHOTO: W. F. FOSHAG



FILM NO.

FILE NO.

DATE ACCESSIONED

SUBJECT

PARÍCUTIN VOLCANO,
MICHHOACAN, MEXICO

NOTES

37. JUNE 10, 1943

SMALL LAVA FLOW AT BASE OF
CONE.

PHOTO: W. F. FOSHAG

38. JUNE 12, 1943

BROKEN NORTH SLOPE OF CONE
AFTER COLLAPSE OF JUNE 9, WITH
UPPER COLLAPSE TERRACE TO RIGHT.
LAVA, BREAKING OUT AT THE BASE
OF THE CONE, CARRIED AWAY A
QUARTER SEGMENT.

PHOTO: W. F. FOSHAG

FILM NO.



FILE NO. | DATE ACCESSIONED

SUBJECT

PARÍCUTIN VOLCANO,
MICHUACAN, MEXICO

NOTES

39. JUNE 13, 1943

PARÍCUTIN LAVA FLOW APPROACH-
ING PARÍCUTIN VILLAGE. THE LAVA
ADVANCES AS A MOVING WALL OF
RUBBLE.

PHOTO: W. F. FOSHAG

40. JUNE 15, 1943

FROM JARÁTIRO HILL. LAVA
FLOW AND ERUPTIVE ACTIVITY AT
NIGHT. LAVA ISSUES FROM A BREAK
IN THE CONE AND CASCADES DOWN THE
COLLAPSE TERRACES.

PHOTO: W. F. FOSHAG



FILM NO.

FILE NO.

DATE ACCESSIONED

SUBJECT

PARÍCUTIN VOLCANO,
MICHHOACAN, MEXICO

NOTES

41. JUNE 18, 1943

FROM THE NORTHEAST. LAVA
ISSUES FROM THE BASE OF THE SMALL
STEAM COLUMN, FORMS A DARKER BAND
WHERE THE TERRACE JOINS THE CONE,
AND SPREADS OUT IN THE VALLEY
BELOW.

PHOTO: W. F. FOSHAG

42. JUNE 19, 1943

FROM JARÁTIRO HILL. NORTH
CRATER VENT AS A SMALL CHIMNEY;
SOUTH CRATER VENT BEHIND MEDIAN
RIDGE.

PHOTO: W. F. FOSHAG



FILM NO.

FILE NO.

DATE ACCESSIONED

SUBJECT

PARÍCUTIN VOLCANO,
MICHOCAN, MEXICO

NOTES

43. JUNE 20, 1943

FROM THE NORTHEAST. LAVA
FLOW FROM HIGH VENT, MOVING DOWN
COLLAPSE TERRACE.

PHOTO: RAFAEL GARCIA

44. JUNE 28, 1943

FROM THE NORTHEAST. THE
COLLAPSED PORTION OF THE CONE
PARTLY RESTORED. LAVA FLOW FROM
HIGH VENT.

PHOTO: ARNO BREHME



FILM NO.

FILE NO.

DATE ACCESSIONED

SUBJECT

PARÍCUTIN VOLCANO,
MICHOCAN, MEXICO

NOTES

45. JULY 10, 1943

FROM JARÁTIRO HILL. ROCKY
PEAKS WERE A PART OF THE CONE
RAFTED AWAY BY LAVA FLOW TO FORM
THE QUITZOCHO RIDGE. COLLAPSE
SIMILAR TO THAT OF JUNE 9.

PHOTO: EZEQUIEL ORDOÑEZ

46. JULY 18, 1943

BLOCK LAVA FLOW. FIGURE AT
FOOT OF FLOW INDICATES SCALE.

PHOTO: CHAVEZ RUIZ



FILM NO.

FILE NO.

DATE ACCESSIONED

SUBJECT

PARÍCUTIN VOLCANO,
MICHOCAN, MEXICO

NOTES

47. JULY 25, 1943

FROM THE NORTHEAST. A LAVA
FLOW HAS DAMMED THE VALLEY TO
FORM A SMALL POND.

PHOTO: W. F. FOSHAG

48. JULY 26, 1943

FROM JARÁTIRO HILL. GREAT
EXPLOSIONS FROM THE NORTH CRATER
VENT AND HEAVY EMISSIONS FROM THE
SOUTH VENT. LAVA FLOWS OF JULY
MOVING OVER ASH-COVERED LAVAS OF
MARCH.

PHOTO: W. F. FOSHAG



FILM NO.

FILE NO.

DATE ACCESSIONED

SUBJECT

PARÍCUTIN VOLCANO,
MICHUACAN, MEXICO

NOTES

49. JULY 27, 1943

FROM JARÁTIRO HILL. BREAK
OF THE CONE OF MID JULY LARGELY
REPAIRED. MODERATE ERUPTIVE
COLUMN WITH LITTLE ASH BUT MANY
BOMBS.

PHOTO: W. F. FOSHAG

50. JULY 31, 1943

FROM PARÍCUTIN VILLAGE.
THE VILLAGE IS ABANDONED BECAUSE
OF THE HEAVY COVER OF ASH.

PHOTO: W. F. FOSHAG



FILM NO.

FILE NO.

DATE ACCESSIONED

SUBJECT

PARÍCUTIN VOLCANO.
MICHUACAN. MEXICO

NOTES

51. EARLY JULY, 1943, BEFORE THE
COLLAPSE OF THE CONE.

FROM JARÁTIRO HILL. ERUPTIVE
CHIMNEY ON THE NORTHEAST FLANK OF
THE CONE. LAVAS OF JUNE OVER ASH-
COVERED LAVAS OF MARCH.

PHOTO: EZEQUIEL ORDOÑEZ

52. LATE JULY, 1943

FROM JARÁTIRO HILL. NIGHT
VIEW SHOWING INCANDESCENT
ERUPTIVE COLUMN. THIS COLUMN
FREQUENTLY ROSE TO A HEIGHT OF
1-1/2 KILOMETERS.

PHOTO: W. F. FOSHAG



FILM NO.

FILE NO.

DATE ACCESSIONED

SUBJECT

PARÍCUTIN VOLCANO,
MICHUACAN, MEXICO

NOTES

53. AUG. 1, 1943

BURSTING OF GREAT LAVA

BUBBLES IN CRATER, YIELDING HUGE
TATTERS OF VISCOUS LAVA.

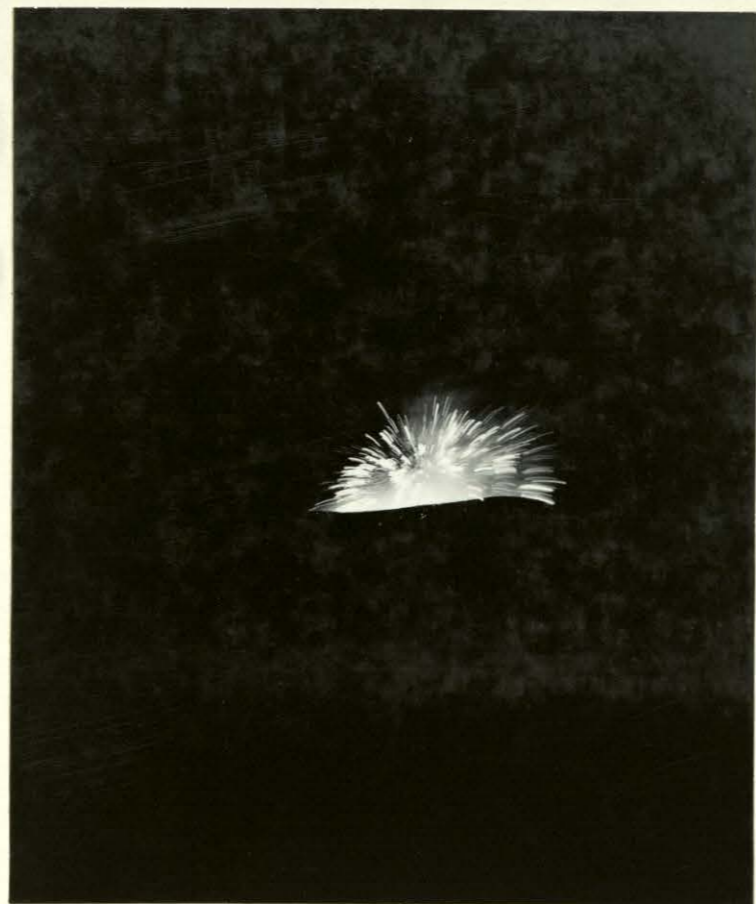
PHOTO: W. F. FOSHAG

54. AUG. 1, 1943

BURSTING OF HUGE LAVA

BUBBLES. THE EJECTED MASSES OF
VISCOUS LAVA FLOWED DOWN THE
SLOPE OF THE CONE. EXPOSURE
ABOUT 15 SECONDS.

PHOTO: W. F. FOSHAG



FILM NO.

FILE NO.

DATE ACCESSIONED

SUBJECT

PARÍCUTIN VOLCANO,
MICHUACAN, MEXICO

NOTES

55-56. AUG. 2, 1943

FROM JARÁTIRO HILL. COLLAPSE
OF THE NORTH SIDE OF THE CONE,
DUE TO RAFTING BY OUTBREAK OF
LAVA FLOW FROM THE BASE. FROM
THE WEAKENED FLANK OF THE CONE
AROSE MIGRATING JETS OF ASH.
THE CONICAL PEAKS MOVED 485 METERS
IN 24 HOURS. PHOTOS TAKEN IMMEDI-
ATELY AFTER THE COLLAPSE.

PHOTOS: W. F. FOSHAG



FILM NO.

FILE NO.

DATE ACCESSIONED

SUBJECT

PARÍCUTIN VOLCANO,
MICHUACAN, MEXICO

NOTES

57. AUG. 3, 1943

FROM JARÁTIRO HILL. BREAK
IN THE NORTH SIDE OF THE CONE,
COLLAPSE TERRACES, AND QUITZOCHO
RIDGE.

PHOTO: W. F. FOSHAG

58. AUG. 4, 1943

FROM JARÁTIRO HILL. NORTH
CRATER VENT IN ERUPTION IN THE
BREAK IN THE CONE; SOUTH CRATER
VENT BEHIND THE MEDIAN RIDGE.

PHOTO: W. F. FOSHAG



FILM NO.

FILE NO.

DATE ACCESSIONED

SUBJECT

PARÍCUTIN VOLCANO,
MICHUACAN, MEXICO

NOTES

59. JUNE 10, 1943

EARLY STAGE IN GROWTH OF
QUITZOCHO RIDGE, BY FLOW OF LAVA
BENEATH THE ASH.

PHOTO: W. F. FOSHAG

60. AUG. 25, 1943

LATE STAGE IN GROWTH OF
QUITZOCHO RIDGE. THE RIDGE IS
SLOWLY RISING DUE TO FURTHER
INCREMENT OF LAVA BELOW.

PHOTO: EZEQUIEL ORDÓÑEZ



FILM NO.

FILE No.

DATE ACCESSIONED

SUBJECT

PARÍCUTIN VOLCANO,
MICHUACAN, MEXICO

NOTES

61. AUG. 25, 1943

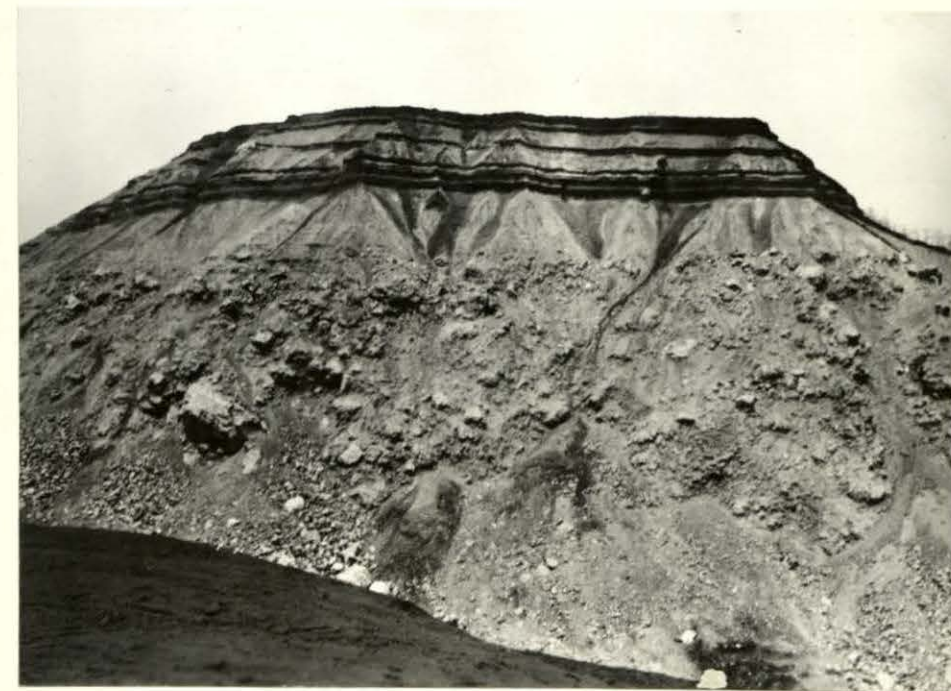
THE QUITZOCHO RIDGE.

PHOTO: EZEQUIEL ORDOÑEZ

62. SEPT. 1943

ELEVATED BEDDED ASH CAPPING
QUITZOCHO RIDGE. THE ROUGH
LOWER SLOPES ARE THE INTRUDED
LAVA FLOW.

PHOTO: EZEQUIEL ORDOÑEZ



FILM No.

FILE NO.

DATE ACCESSIONED

SUBJECT

PARÍCUTIN VOLCANO,
MICHUACAN, MEXICO

NOTES

63. SEPT. 17, 1943

FROM JARÁTIRO HILL. LAZY
EMISSION OF ASH-LADENED ERUPTIVE
COLUMN.

PHOTO: W. F. FOSHAG

64. SEPT. 18, 1943

FROM JARÁTIRO HILL.
WHIRLWIND FORMED BY AIR CURRENT
ASCENDING SLOPE OF CONE TO MEET
DESCENDING ASH-LADENED CURRENT
FROM ERUPTIVE COLUMN.

PHOTO: W. F. FOSHAG



FILM NO.

FILE NO.

DATE ACCESSIONED

SUBJECT

PARÍCUTIN VOLCANO,
MICHOACAN, MEXICO

NOTES

65. OCT. 19, 1943

FROM JARÁTIRO HILL. WELL
DEFINED BELT OF STEAMING ASH ON
THE CONE. SUCH BELTS OF STEAM
WERE FAIRLY FREQUENT.

PHOTO: ARNO BREHME



FILM NO.

FILE No.

DATE ACCESSIONED

SUBJECT

PARÍCUTIN VOLCANO,
MICHUACAN, MEXICO

NOTES

66. OCT. 20, 1943

BIRTH OF ZAPICHO, AN ADVENTITIOUS CONE AT THE N. E. FOOT OF THE CONE. SEVEN VENTS FOLLOWED A N. E. LINE FROM THE CONE. ONE PERSISTED TO FORM ZAPICHO.

PHOTO: ARNO BREHME

67. OCT. 21, 1943

ZAPICHO FROM THE EAST.

PHOTO: LYN STORM



FILM No.

FILE NO.

DATE ACCESSIONED

SUBJECT

PARÍCUTIN VOLCANO,
MICHUACAN, MEXICO

NOTES

68. OCT 21, 1943

FROM THE NORTH. AN ERUPTIVE
CHIMNEY ON THE FLANK OF THE CONE.
ZAPICHO AT THE BASE OF THE CONE.
INFRA RED FILM.

PHOTO: LYN STORM

69. OCT. 24, 1943

ZAPICHO FROM THE WEST. THE
CREST LINE VARIED WITH THE GROWTH
OF THE CONE.

PHOTO: EZEQUIEL ORDOÑEZ



FILM NO.

FILE NO.

DATE ACCESSIONED

SUBJECT

PARÍCUTIN VOLCANO,
MICHUACAN, MEXICO

NOTES

70. NOV. 24, 1943

CRAGS OF ZAPICHO LAVA UPON
ASH-COVERED EARLIER FLOWS.

PHOTO: VILLA SEÑOR

71. NOV. 28, 1943

FROM JARÁTIRO HILL. LAZY
STEAM EMISSION FROM THE MAIN
CRATER. ZAPICHO IN ERUPTION AT
BASE OF THE CONE.

PHOTO: W. F. FOSHAG



FILM No.

FILE NO.

DATE ACCESSIONED

SUBJECT

PARÍCUTIN VOLCANO,
MICHUACAN, MEXICO

NOTES

72. DEC. 5, 1943

ZAPICHO FROM THE EAST. A
CONSTANT COLUMN OF BOMBS AROSE
FOR 2-1/2 MONTHS.

PHOTO: W. F. FOSHAG

73. JAN. 1944

EXTINCT ZAPICHO, SHOWING ITS
HORSESHOE SHAPE. ASH-COVERED
ZAPICHO LAVA IN FOREGROUND.
ZAPICHO BECAME EXTINCT ON JAN. 8,
1944, AND IS NOW BURIED UNDER
LAVA.

PHOTO: EZEQUIEL ORDOÑEZ



INSTITUTO DE GEOLOGIA
BIBLIOTECA

FILM NO.

FECHA DE DEVOLUCION

El lector se obliga a devolver este libro
antes del vencimiento de préstamo señala-
do por el último sello.





INSTITUTO DE GEOLOGIA
BIBLIOTECA

